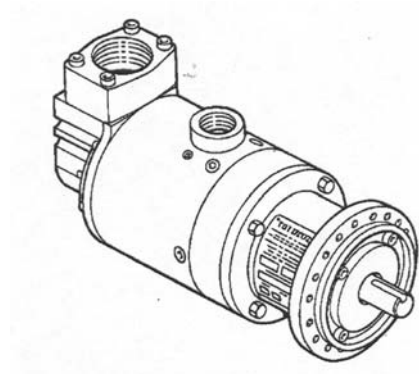


ILLUSTRATED PART BREAKDOWN



MODEL: T30-M ***TURBO*TWIN Engine Air Starter**

P/N: T303-60023-00L-1

P/N: T306-60023-00L-1



RJ Mann & Associates Inc.

Engine Controls & Panels/Compressor Parts

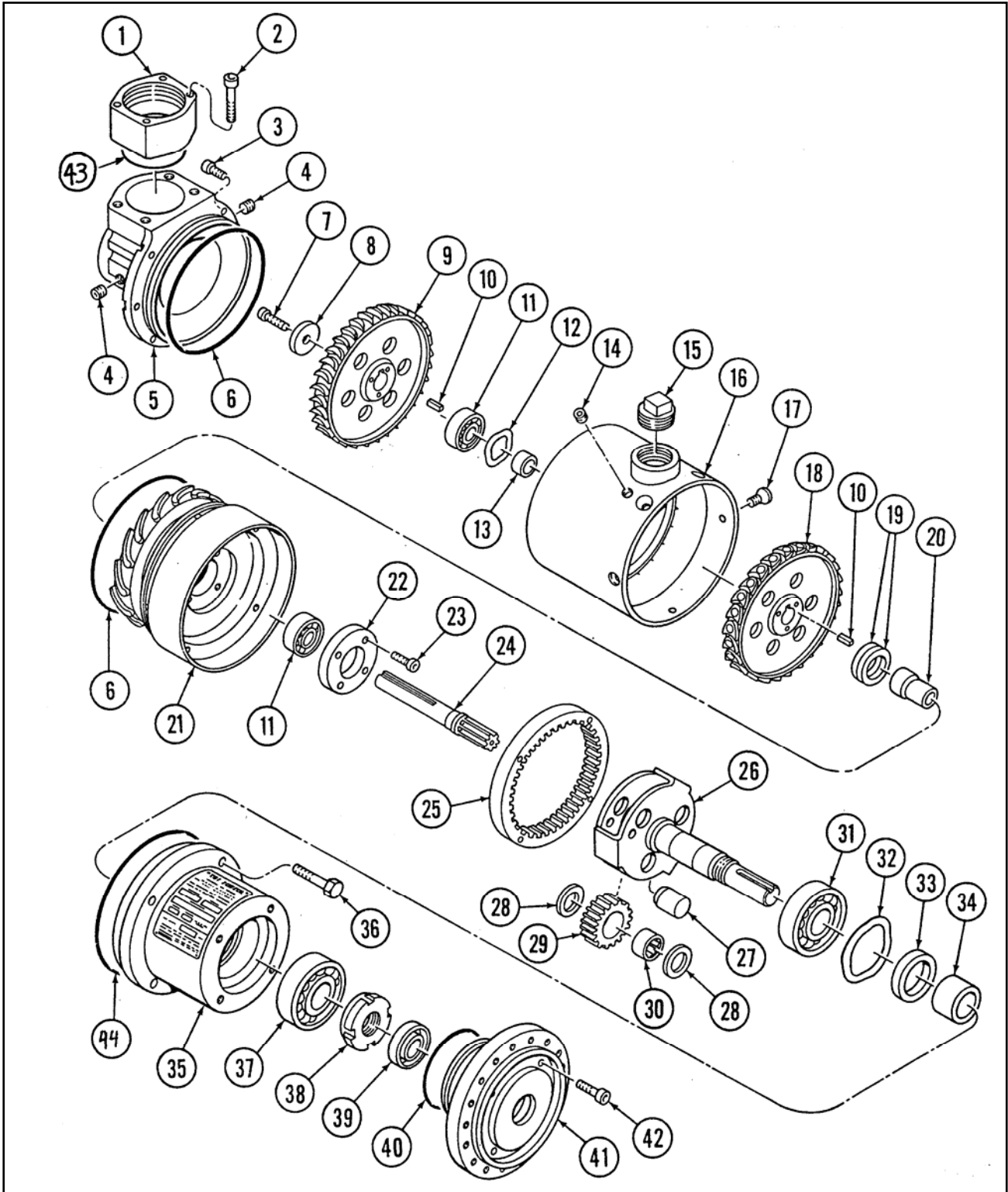
860 North 9th Avenue, Brighton, CO 80603

Ph: (303) 659-5139 Fax: (303) 659-5309

www.rjmann.com

ITEM #	DESCRIPTION	PART NUMBER	QTY	Overhaul Kit
				T30M-27625-001
1	Inlet Adaptor, 2" NPT; S/N: Before 9608-001	2-27275	1	
2	Screw Used with Item #1 Before 9608-001	14F-31218-028	4	
3	Screw	14F-16432-008	7	√
4	Hollow Hex Plug, Exhaust Check Port	9-93501-002	1	
5	Exhaust Adaptor Elbow (Before S/N: 9608-001)	2-27248	1	
5	Exhaust Elbow, 1 1/2" NPT (After S/N: 9608-001)	2-27555	1	
6	O-Ring	9-90001-047	2	√
7	Screw, Rotor Attachment	14F-25028-012	1	√
8	Rotor Washer	9-93047	1	
9	Stage 2 Rotor	2-27232	1	
10	Square Key (1/8")	9-90220-050	2	
11	Turbine Bearing	9-91224	2	√
12	Bearing Pre-Load Spring	9-90439	1	√
13	Bearing Spacer	9-93091-003	1	
14	Hollow Hex Plug	9-93501-002	1	
15	1" NPT Caplug	9-93502-006	1	
16	Stage 2 Noz/ Containment (LH)	2-27405-00L	1	
17	Screw	24F-25020-012	5	√
18	Stage 1 Rotor	2-27225	1	
19	Lip Seal	2-26719	2	√
20	Spacer/SealBearing	9-93114	1	√
21	Turbine Hsg. / Stage 1 (3 Noz. LH)	2-27389-03L	1	
21	Turbine Hsg. / Stage 1 (6 Noz. LH)	2-27389-06L	1	
22	Bearing Retainer	2-27406	1	
23	Screw	14F-25020-012	4	√
24	Turbine Shaft (9.0:1)	2-27391-001	1	
25	Ring Gear	2-27395	1	
26	Carrier Shaft Weldment (9.0:1)	2-27422-002	1	
27	Planet Shaft	2-22051	3	
28	Planet Gear Spacer	9-93065	6	√
29	Planet Gear (9.0:1)	2-23878	3	
30	Planet Bearing	9-91389	3	√
31	Gearbox Bearing	9-91394	1	√
32	Bearing Pre-Load Spring	9-90402-023	1	√

ITEM #	DESCRIPTION	PART NUMBER	QTY	Overhaul Kit
				T30M-27625-001
33	Lip Seal, Gearbox Grease	9-90033	1	√
34	Bearing Spacer (Gearbox)	9-93119	1	√
35	Gearbox Housing	2-27408	1	
36	Hex Bolts (Gearbox Attachment)	14F-25020-024	4	√
37	Gearbox Bearing (Same as #31)	9-91394	1	√
38	Bearing Retainer Nut	9-92105-006	1	
39	Lip Seal	2-23978	1	√
40	O-Ring	9-90001-039	1	√
41	Mounting Flange	2-27610	1	
42	Screw	14F-25020-012	4	√
43	Inlet O-Ring used only before S/N: 9608-001	9-90001-035	1	√
44	O-Ring (Gearbox to Turbine Assy)	9-90001-049	1	



T30-M Exploded View